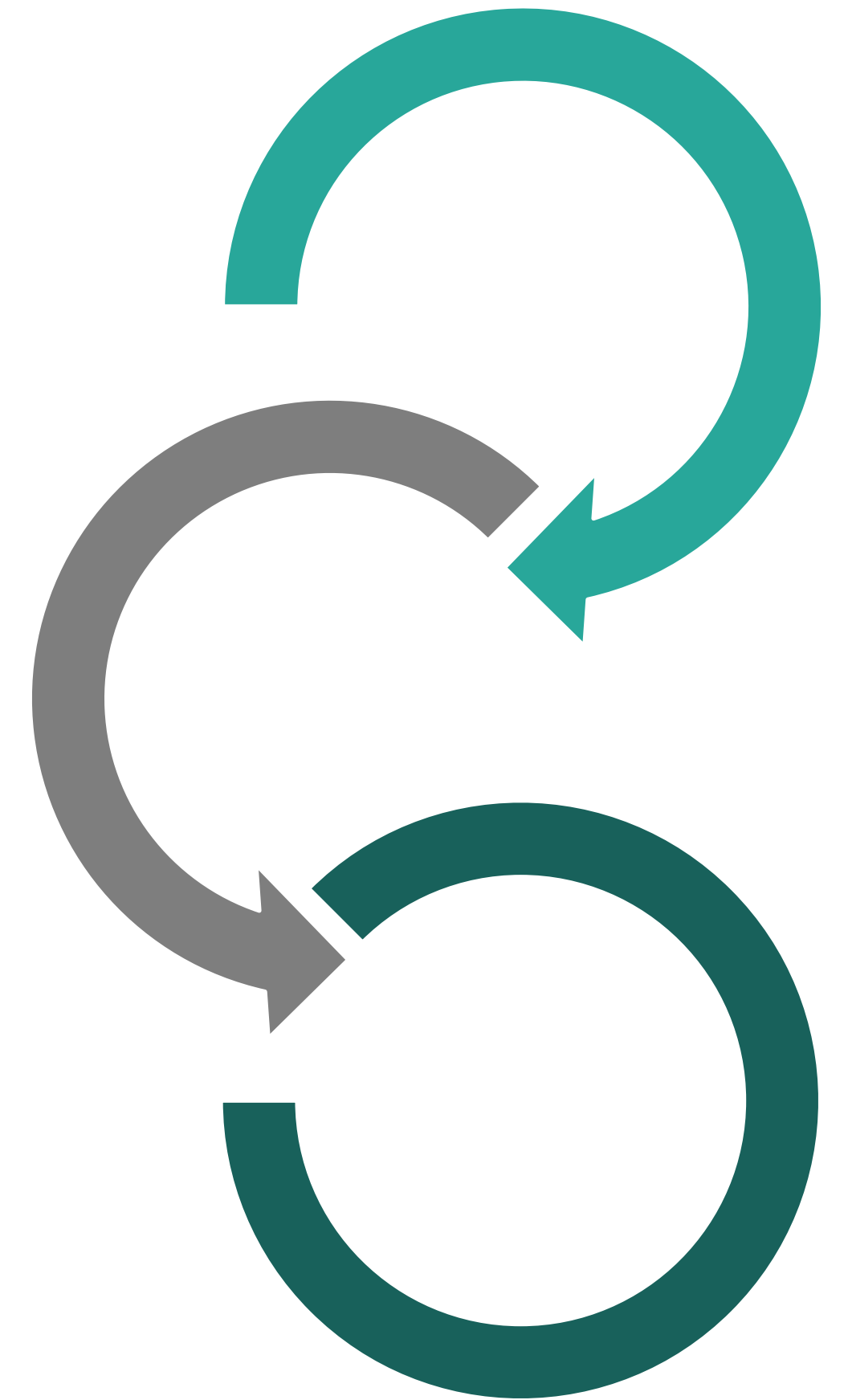


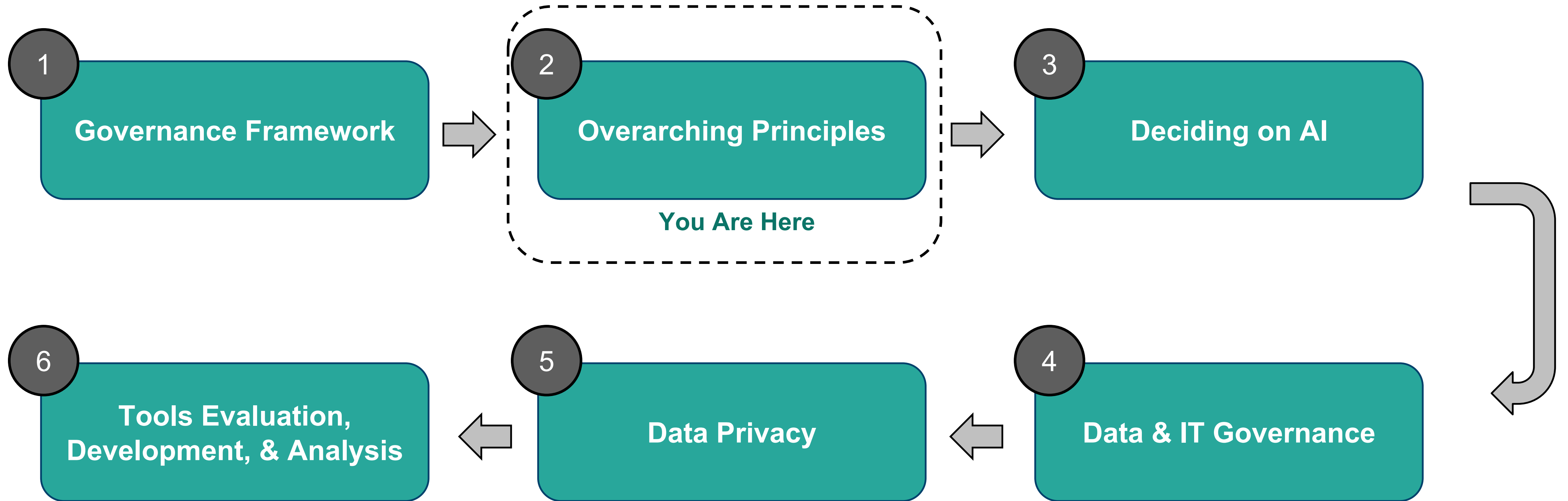
Overarching Principles

And Framing Questions for Organizations

**Presented by ANB Advisory Group
Afua Bruce and Rose Afriyie**



Six modules will guide you through important considerations for nonprofits when implementing AI



At the end of this module, you will...

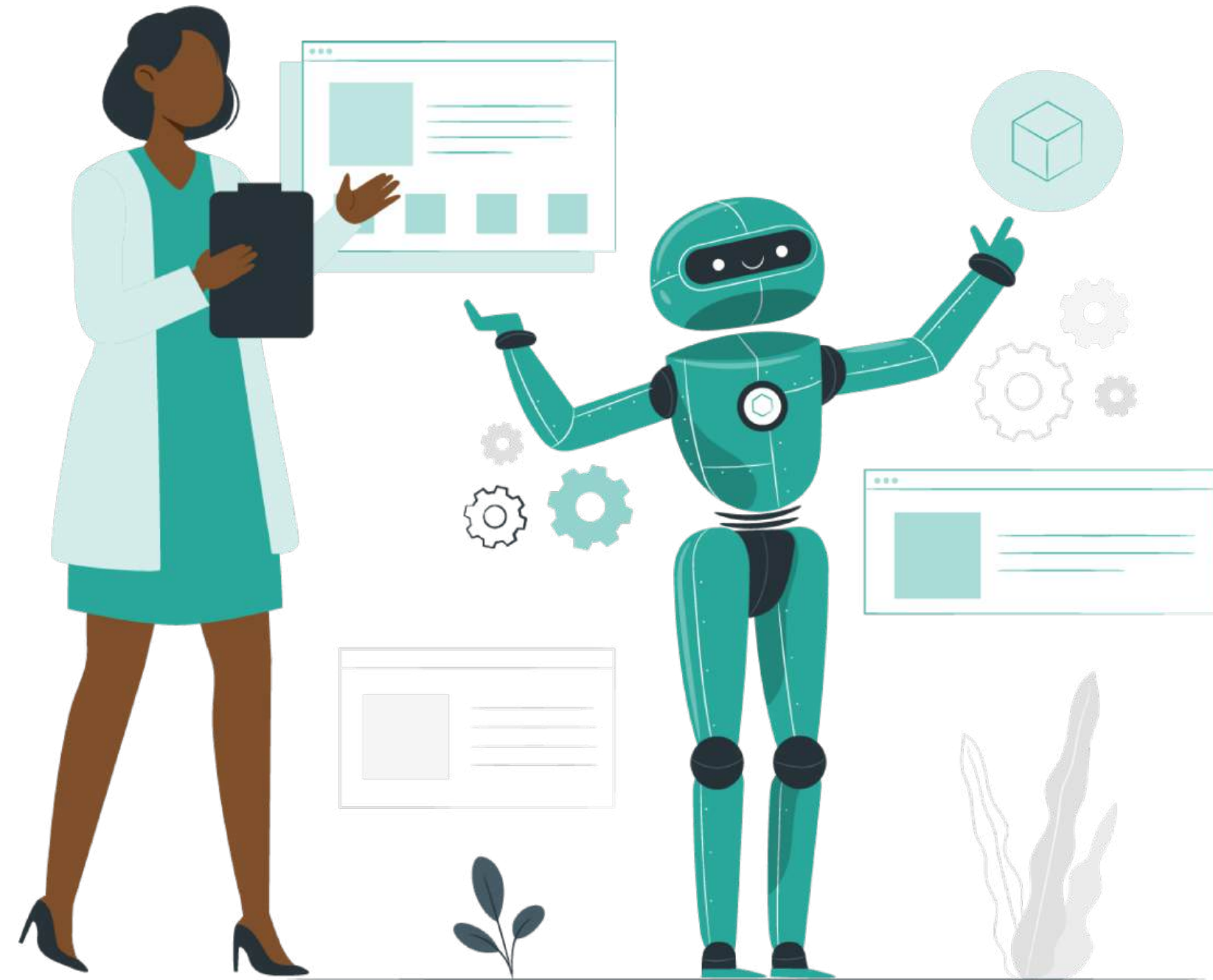


Understand why having stated values can help your organization responsibly adopt AI

Define less sensitive and more sensitive data sources, including personally identifiable data

Know questions to answer that will provide staff with broad guidelines for when to use AI, even as products evolve

AI principles are critical for successful AI implementation



- Ensure use of AI supports organizational mission, vision, and values
- Provide staff with aspects to consider about use of specific tools as AI tools change
- Minimizing harm takes work; principles can guide that work

The AI implementation process is influenced by your organization's principles, mission, and values

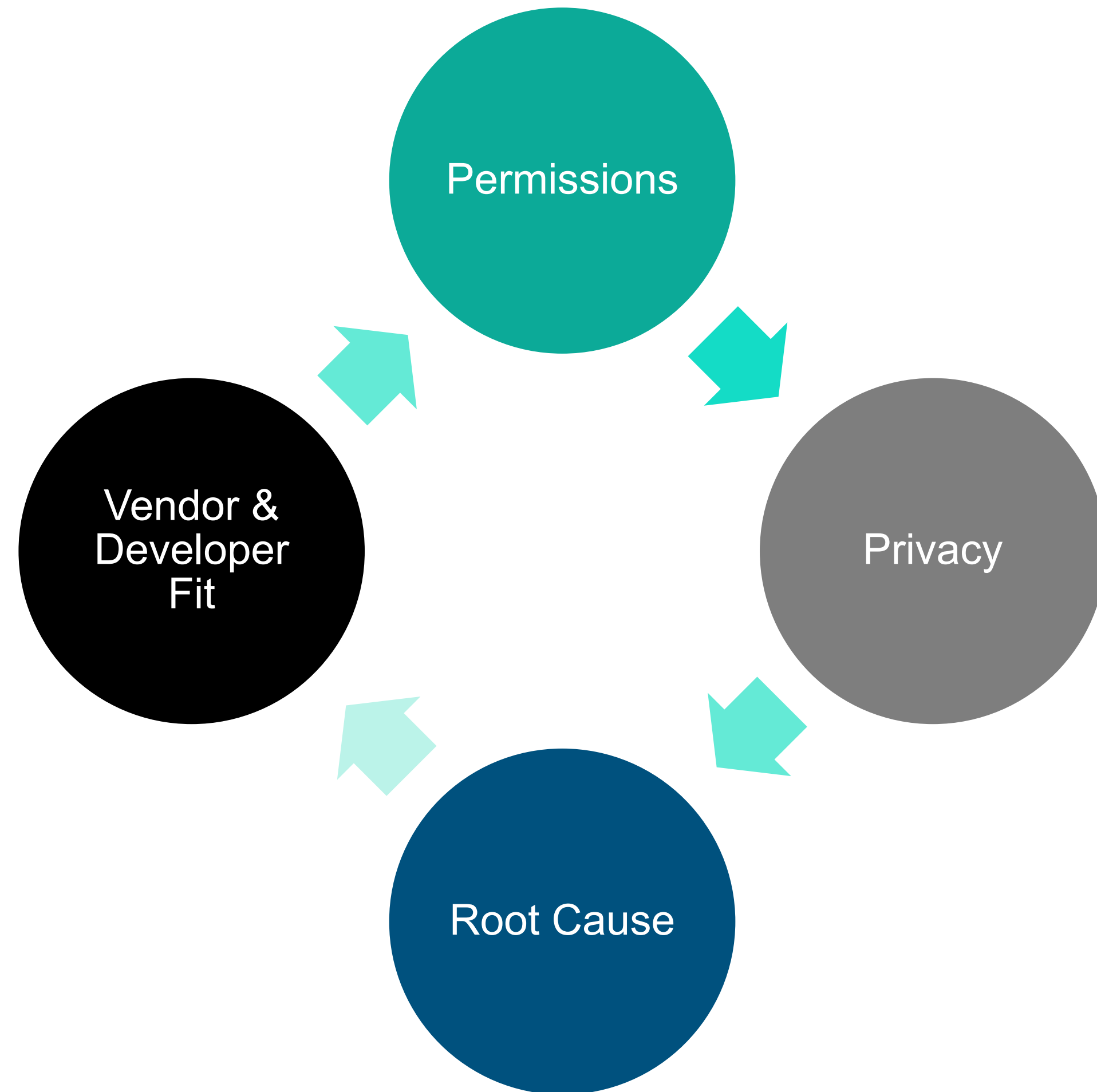


Organizations discussing AI is new; technology is not new

- **Data powers AI:** engage in efforts to understand what data you have, who can access it, and how it is updated and deleted
- Important to **consider what assumptions and bias** may be in your data – and to understand what choices were made
- Vendors, developers, and program staff **must all work together**
 - Ensure all roles have space to ask questions – and get answers
- **Revisit principles and guidelines** as part of strategic and/or annual planning
- Remember: humans make decisions about using technology



Several topics should be considered for most effective AI implementation



Questions to guide your organization: Permissions

Permissions

Does staff need approval to use or develop AI tools?

- If yes, what level (eg: who) must approve?

**Can you use AI to generate or modify external-facing written content?
Internal-facing written content?**

- If yes, do you need to disclose? In what circumstances?

*More details in Module 3:
Deciding on AI*

**Can you use AI to generate or modify external-facing visual content?
Internal-facing visual content?**

- If yes, do you need to disclose? In what circumstances?

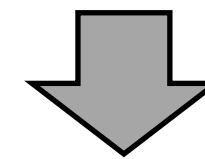
*More details in Module 3:
Deciding on AI*

Questions to guide your organization: Privacy

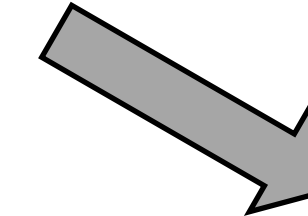
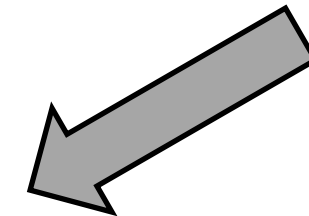
Privacy

What data can be used in generative AI tools? What data cannot be used in generative AI tools?

Consider terms of service for AI tools – what data will be shared with the vendor?



Consider categories of data/information for this distinction



Tier 1: Less sensitive

Publicly available program names and descriptions, high-level budget information

Tier 2: More sensitive

Personally identifiable data including individual client or staff names, social security numbers, financial information tied to specific individuals

Questions to guide your organization: Root Cause & Vendor and Developer Fit

Root
Cause

Is this a technology problem or a people problem?

*More details in Module 3:
Deciding on AI*

Vendor &
Developer Fit

Do vendors and/or developers have clear positions on AI safety? On diverse teams? On working with your community?

*More details in Module 4:
Data & IT Governance*

THANK YOU!

 <https://www.anbadvisory.com/>